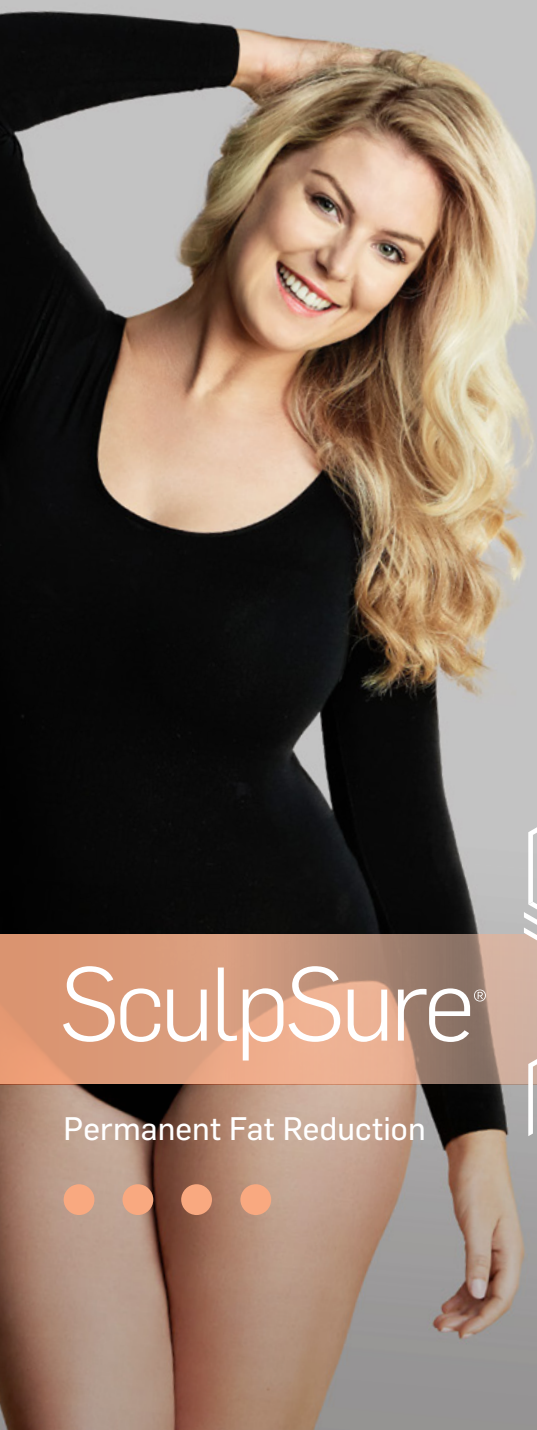


CYNOSURE



# SculpSure<sup>®</sup>

Permanent Fat Reduction



Customised non-invasive treatments  
to meet your desired goals.

## BEFORE AND AFTER



*Before, and 12 weeks after 2nd SculpSure series.*

*Areas treated: Upper & lower abdomen, left and right love handles. Courtesy of S. Doherty, MD*



*Before, and 12 weeks after 1st SculpSure series.*

*Areas treated: Inner thighs. Courtesy of S. Doherty, MD*



*Before, and 12 weeks after 2nd SculpSure series.*

*Areas treated: Left and right love handles. Courtesy of S. Doherty, MD*



*Before, and 12 weeks after 2nd SculpSure series.*

*Area treated: Under the chin. Courtesy of R. Geronemus, MD*



*Before, and 12 weeks after 2nd SculpSure series.*

*Area treated: Under the chin. Courtesy of B. Katz, MD*

# REDEFINE YOUR SHAPE

## Treatment Areas

Chin



Back



Love Handles



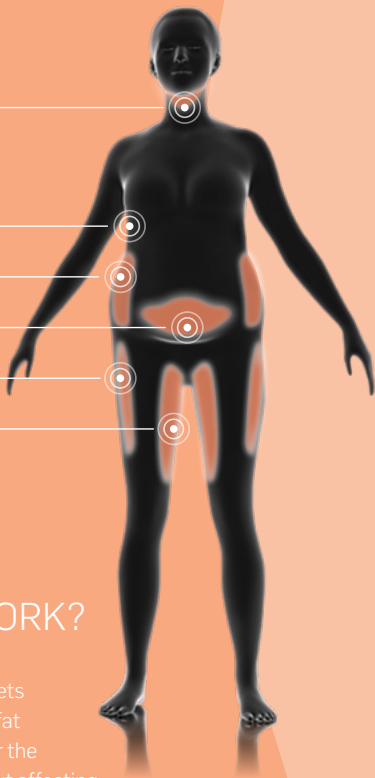
Abdomen



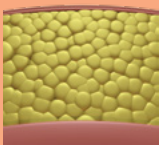
Outer Thigh



Inner Thigh



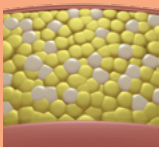
## HOW DOES IT WORK?



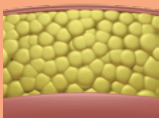
Laser targets and heats fat cells under the skin without affecting the skin's surface.



SculpSure raises the temperature of fat cells damaging their structural integrity. Contact Cooling™ stays on throughout the treatment, which keeps the skin safe and comfortable.



The damaged fat cells are removed naturally from your body through your lymphatic system.



Once the fat cells are removed from your body they cannot regrow.

# FREQUENTLY ASKED QUESTIONS

## What is SculpSure?

SculpSure is a non-invasive body contouring treatment to remove stubborn fat. Each 25 minute procedure can destroy up to 24%<sup>1</sup> of treated fat cells for the body and 23%<sup>2</sup> for under the chin area without surgery.

## What areas can be treated with SculpSure?

SculpSure is FDA-cleared and TGA-listed to reduce stubborn fat in the belly, love handles, back, thighs, and under the chin.

## Is SculpSure right for me?

SculpSure is ideal for people with trouble spots, particularly those that seem resistant to diet and exercise.

## How many treatments will I need?

Every patient is different. Most people see the best results when they receive a series of treatments. Ask your SculpSure provider about the treatment plan that is right for you.

## What should I expect during the treatment?

Most patients feel deep warmth and tingling sensations intermittently throughout the treatment, which is generally well-tolerated.<sup>3</sup>

## When will I see results?

Patients may start to see results as early as 6 weeks following treatment as the body begins to eliminate the destroyed fat cells, with optimal results usually seen at 12 weeks.

## How long will results last?

Treated fat cells are destroyed during the treatment and will not regenerate.

## How long before I can resume normal activities?

There is no downtime following your SculpSure treatment, allowing you to resume your daily activities right away.

## What is the difference between fat loss and weight loss?

The number of fat cells stored in our bodies typically remains constant throughout adult life. As we lose weight, the size of fat cells become smaller, but do not decrease in number. Even with diet and exercise, many people have difficulty reducing volume in these trouble areas. After the SculpSure treatment, the fat cells are permanently destroyed<sup>2</sup> and will not return.

- ⦿ No surgery
- ⦿ No downtime
- ⦿ Just results

# SculpSure®

PERMANENT FAT REDUCTION



# GET YOUR CONFIDENCE BACK!

---

Ask your provider if  
SculpSure is right for you.

 Sculpsure Australia  sculpsure\_

Cynosure (Australia) Pty Ltd  
14-16 Suakin St,  
Pymble NSW 2073  
+61 2 9484 4546 | infoaustralia@cynosure.com

**[cynosureaustralia.com](http://cynosureaustralia.com)**

**Models used for illustrative purposes only. Individual results may vary and are not guaranteed. SculpSure is a non-invasive laser body contouring system designed to permanently eliminate fat cells from the chin (submental) area, abdomen, love handles (flanks), back, inner thighs and outer thighs. SculpSure is not a weight loss solution or for people who are obese.**

1. Single treatment with an average reduction in fat volume as measured by MRI; Clinical and Histological Evaluations of a 1060nm Laser Device for Non-Invasive Fat Reduction - John W. Decorato., FACS. Rafael Sierra,PH.D., Westford, MA, 2014, 2. Clinical data on file, Cynosure. 3. Average patient discomfort rating of 3.6 on a scale of 1-10; Bass L, Doherty S. Cynosure data on file.

© 2020 Cynosure, Inc. Cynosure and SculpSure are registered trademarks of Cynosure, Inc. A Smarter Way to Sculpt is a trademark of Cynosure, Inc. Cynosure, Inc. owns exclusive rights to photography. Use of photography without written permission of Cynosure is prohibited.

CYNOSURE®